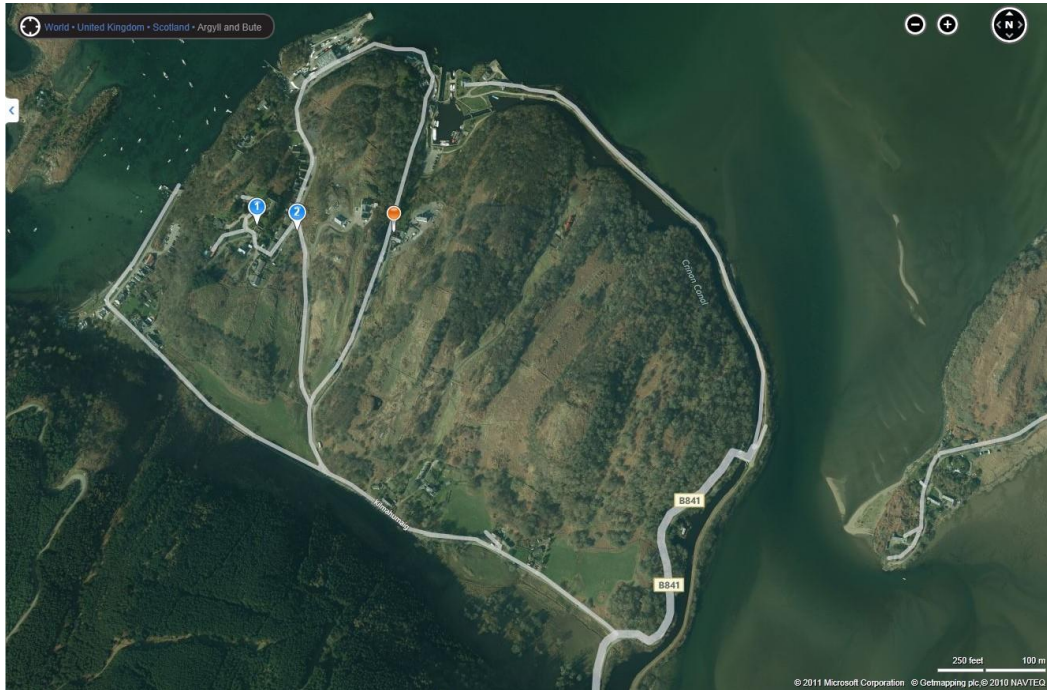


How to find Ruadh Sgeir, Crinan, by Lochgilphead, Argyll PA31 8SW

Phone: 01546 830109

(but don't bank on your mobile working when you reach Crinan – coverage is rotten around here!)



If you put PA31 8SW into your SatNav or Google map or similar, it will probably take you to the orange blob shown on the map which is unhelpful!

Ruadh Sgeir is in fact where the blob marked “1” is shown.

If you put “Crinan” into a TomTom SatNav (and possibly others), it will probably take you to the junction marked “2” on the maps which is just by the bus stop.

At the bus stop junction (if you get to the Crinan Boatyard or the Hotel beyond then you have gone too far), turn sharp left along the row of cottages and then right at the end. Then turn half right again, and Ruadh Sgeir is on your right, probably with my grey Audi A4 parked in front of the garage.

01-05-2021



How to get to Ruadh Sgeir, Crinan, by Lochgilphead, Argyll PA31 8SW

Phone: 01546 830109

(but don't bank on your mobile working when you reach Crinan – coverage is lousy around here!)

From Edinburgh, head to Glasgow on M8 and then take Junction 8 for the M73 BEFORE you get to Glasgow - signposted “Carlisle M73 (M74)”. Then very soon after joining the M73 get in the right hand lane and join the M74 going WEST towards Glasgow Airport and the Erskine Bridge.

From the South, head for Glasgow up the M8 -> M74.

From the Glasgow area, go along M74 all the way to the **Erskine Bridge**, then head for **Dumbarton** on the **A82**, then **Loch Lomond (A82)**, then **Inveraray (A83)**, then **Lochgilphead (A83)**. Follow the main road through Lochgilphead and then follow signs to **Oban (A816)**. Turn right just after crossing the narrow bridge after going along the front at Lochgilphead, then turn left off the Oban road a couple of miles north of Lochgilphead at **Cairnbaan**, then follow signs to **Crinan**.

After the **Cairnbaan Hotel** (on your right) go over the narrow bridge over the canal, and follow the main road all the way to Crinan. You go through **Bellanoch**, passing a junction to Oban on your right and a junction to Tayvallich on your left, wriggle round Bellanoch Basin (with boats moored on pontoons) and keep going along the canal. Shortly before you get to **Crinan**, the main road turns left away from the canal and heads up the hill. At the top of the hill, **DO NOT take the road to Crinan Harbour** (sort of straight on) or the back road down to the Hotel next on your right, but press on until you reach a **minor junction by a row of cottages and a bus stop**. At the bus stop junction (if you get to the Boatyard or the Hotel beyond then you have gone too far), **turn sharp left** along the row of cottages and **then right** at the end. Then turn half right again, and **Ruadh Sgeir** is on your right, probably with my grey Audi A4 parked in front of the garage.

